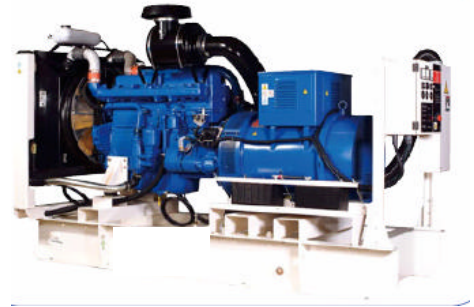




YS450E

GENERAL

OUTPUT RATINGS 50Hz, 380-415V
YS450E 450kVA, 360kW
ENGINE SCANIA
MODEL DC12 54A
ALTERNATOR NEWAGE STAMFORD



TECHNICAL DATA

		YS450E	
Engine Model	DC12 54A		
Number Of Cylinders	6 Cylinder in Line	Fuel Cons: 100% Load l/hr	94.8
Cubic Capacity	11.7 Litres	Fuel Cons: 75% Load	TBA
Aspiration	Turbocharged	Cooling Air Flow : m ³ /min	494
Engine Speed	1500 RPM	Exhaust Gas Flow : m ³ /min	71.1
Fuel Tank Capacity	800 Litres	Exhaust Gas Temp : °C	537

Rating Definitions

YS450E Standby power: Ratings applicable for supplying power in event of power failure. No overload is permitted on these ratings.

GENERAL ARRANGEMENT

To be advised

DIMENSIONS AND WEIGHTS

Length mm	Width mm	Height Mm	Weight (Dry) Kg	Weight inc Lube Oil & Coolant Kg
3400	1380	2000	3265	3315

The units can operate on 100% FAME (Fatty Acid Methyl Ester) of which RME (Rape Methyl Ester) is the most common.

As part of our philosophy of continuous product improvement, YML reserves the right to alter specifications without notice.